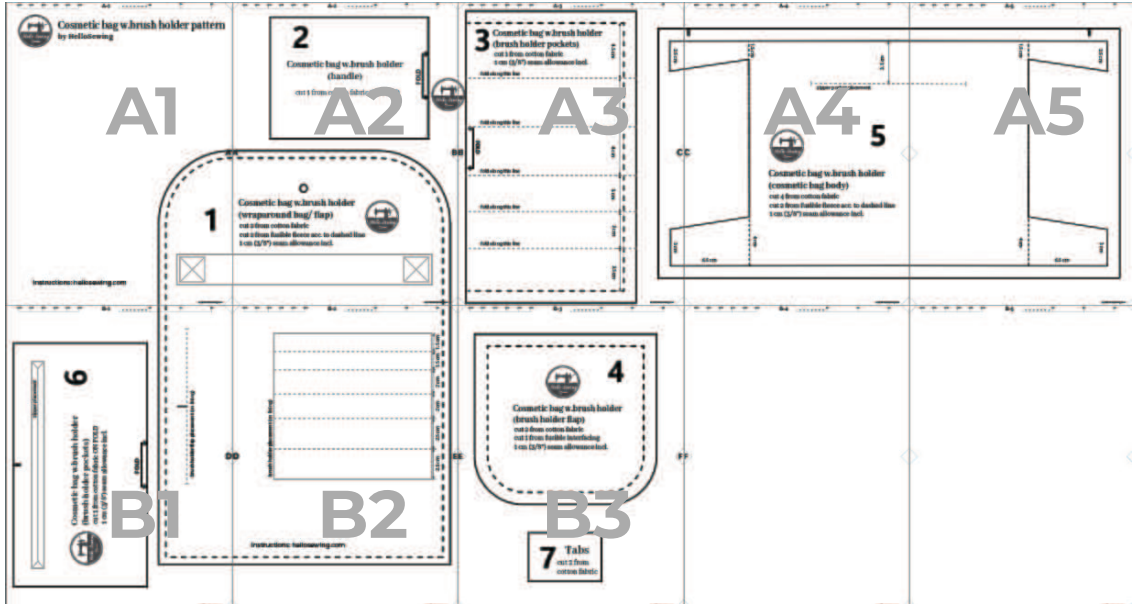




Cosmetic bag w.brush holder pattern by HelloSewing



pattern layout

you will also need:

- zipper #5 - 20cm (8")
- zipper #5 - 38cm (15")

instructions: hellosewing.com



2

Cosmetic bag w.brush holder (handle)

cut 1 from cotton fabric ON FOLD



A

B

O

Cosmetic bag w.brush holder (wraparound bag/ flap)

cut 2 from cotton fabric

cut 2 from fusible fleece acc. to dashed line

1 cm (3/8") seam allowance incl.



3 Cosmetic bag w.brush holder (brush holder pockets)

cut 1 from cotton fabric

1 cm (3/8") seam allowance incl.

fold along this line

4.5 cm

4 cm

fold along this line

4 cm

FOLD

fold along this line

3 cm

fold along this line

3 cm

fold along this line

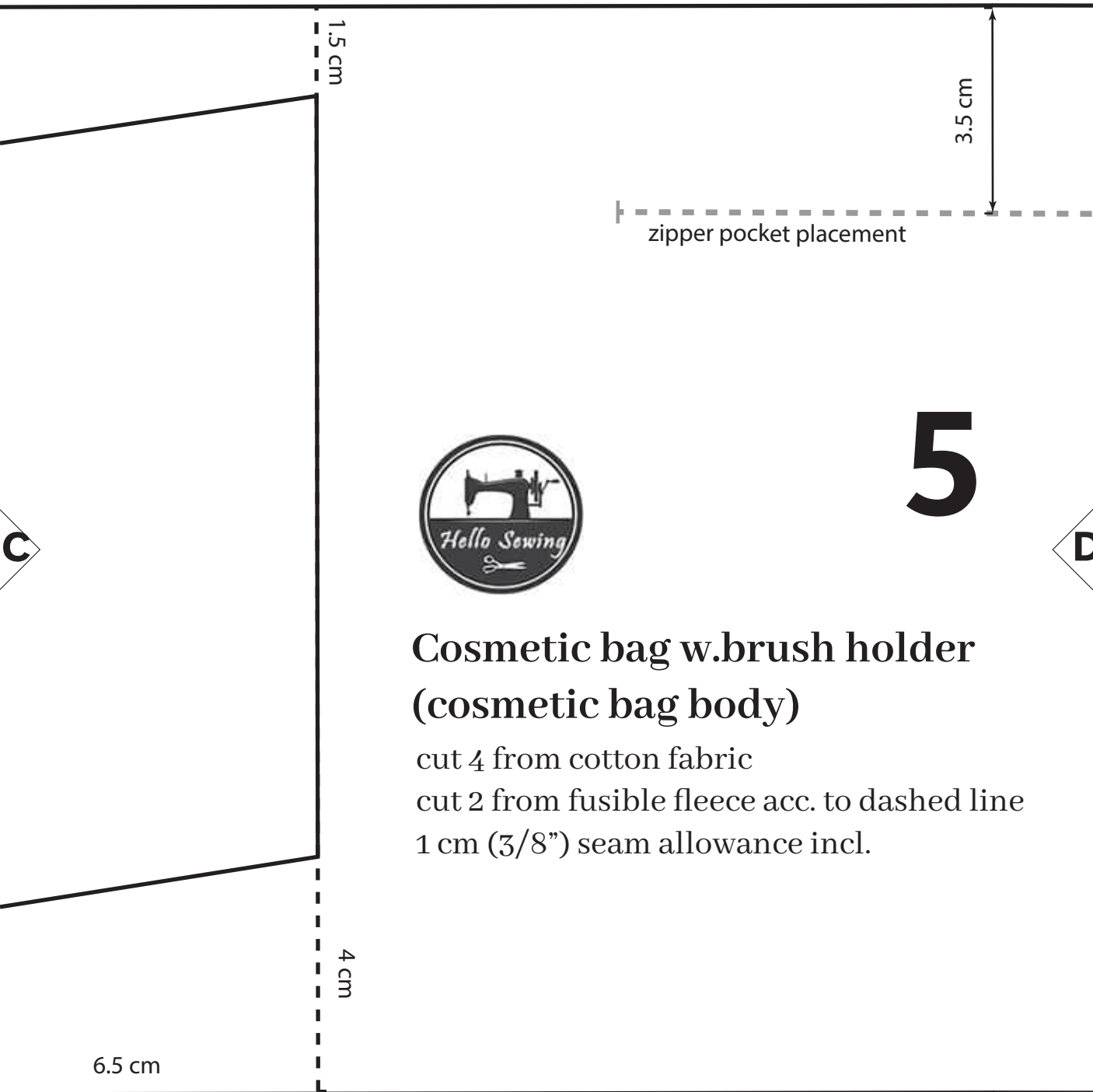
3.5 cm

2.5 cm

C

3 cm

B



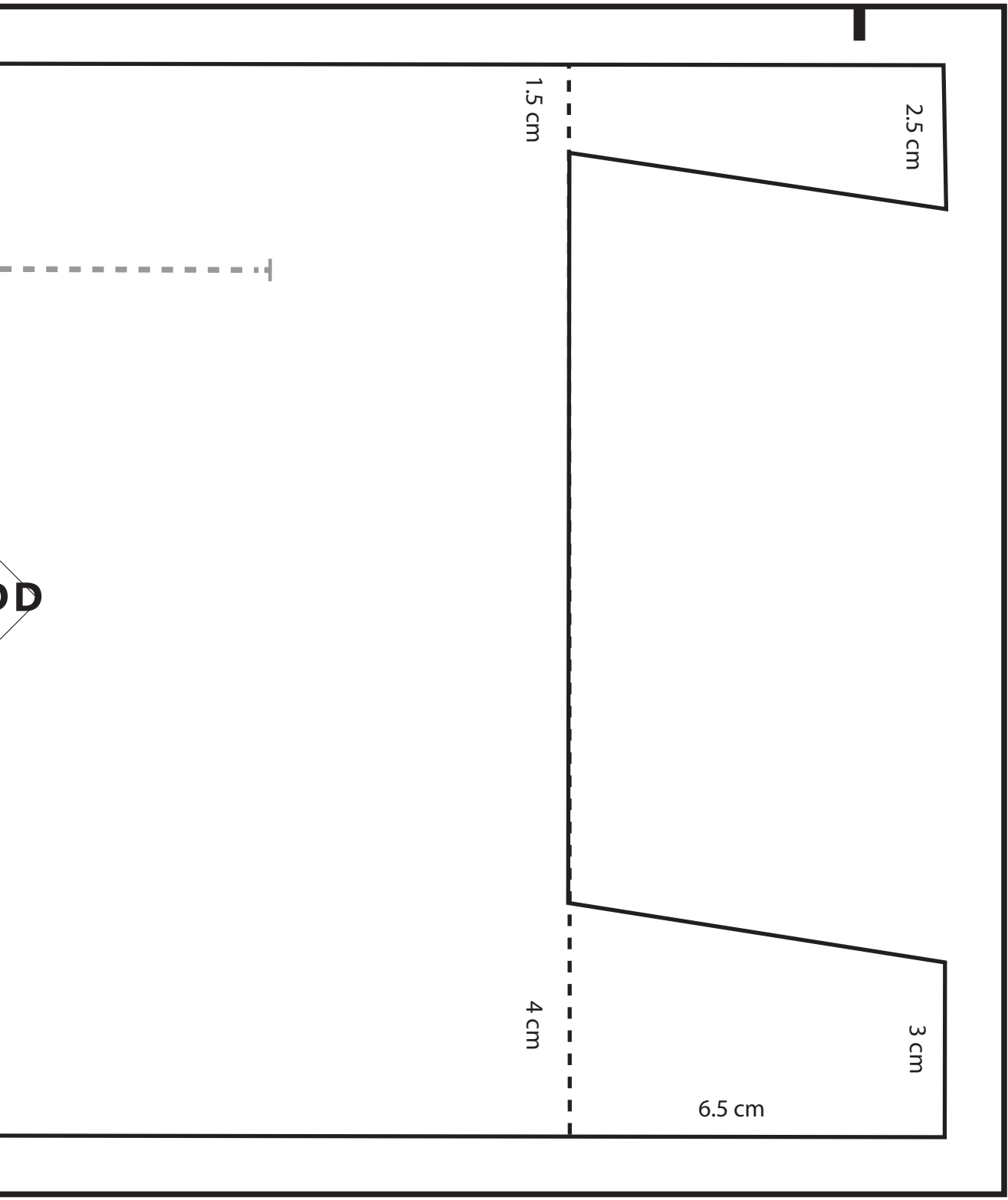
5

**Cosmetic bag w.brush holder
(cosmetic bag body)**

cut 4 from cotton fabric
cut 2 from fusible fleece acc. to dashed line
1 cm (3/8") seam allowance incl.



A-5

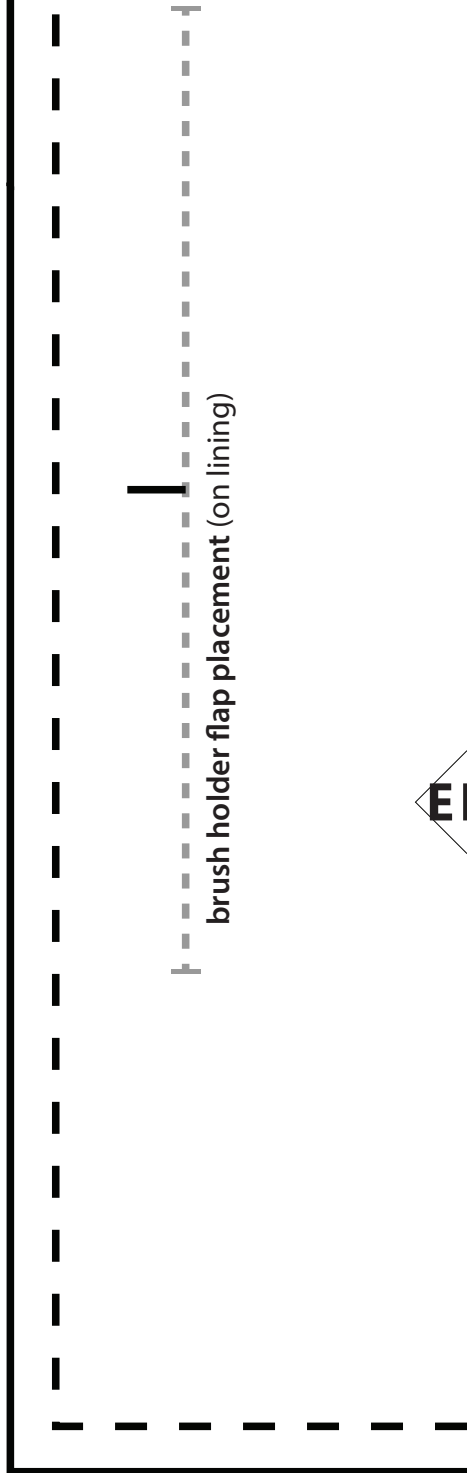




6

Cosmetic bag w.brush holder (brush holder pockets)

cut 1 from cotton fabric ON FOLD
1 cm (3/8") seam allowance incl.





instructions: hellosewing.com



4

**Cosmetic bag w.brush holder
(brush holder flap)**

cut 2 from cotton fabric

cut 1 from fusible interfacing

1 cm (3/8") seam allowance incl.

F

7 **Tabs**

cut 2 from
cotton fabric