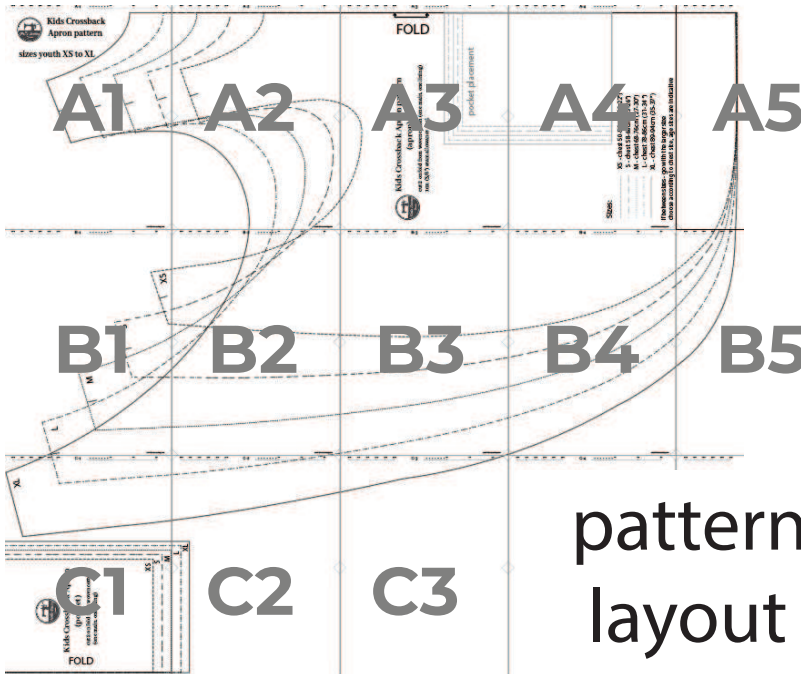
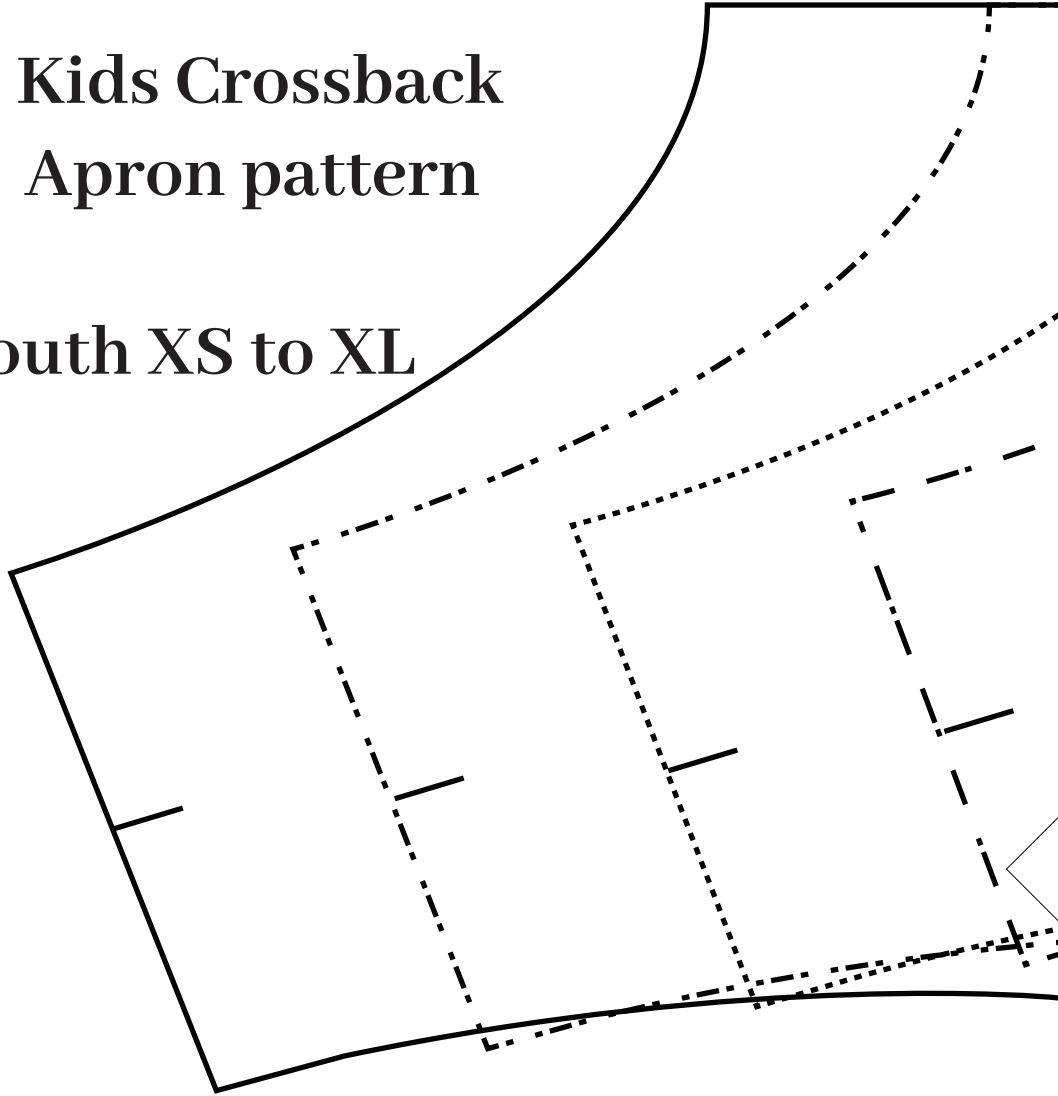


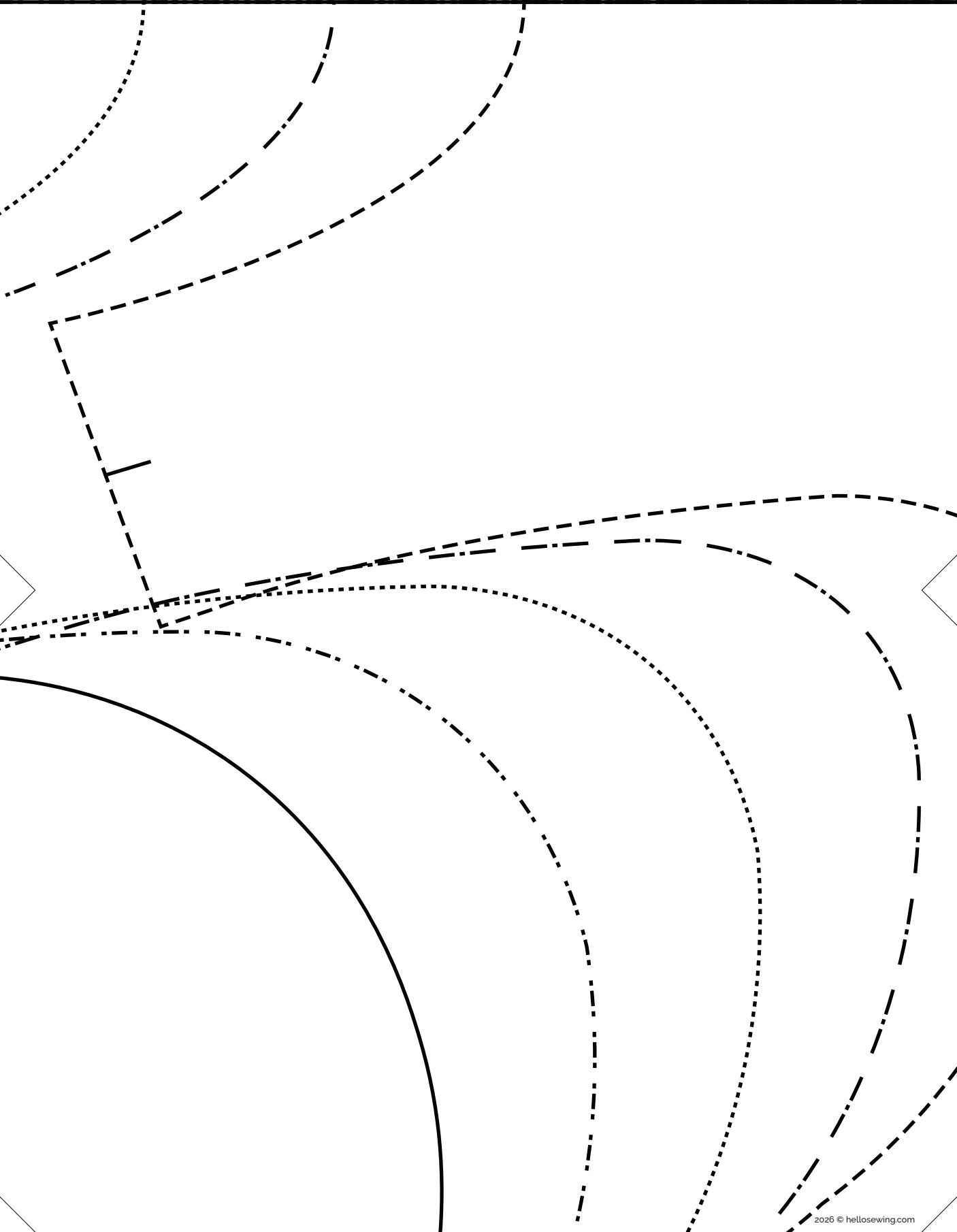


Kids Crossback Apron pattern

sizes youth XS to XL



pattern layout



Kids Crossback Apron pattern (apron)

cut 2 on fold from woven cotton (one main, one lining)
1cm (3/8") seam allowance incl.



FOLD



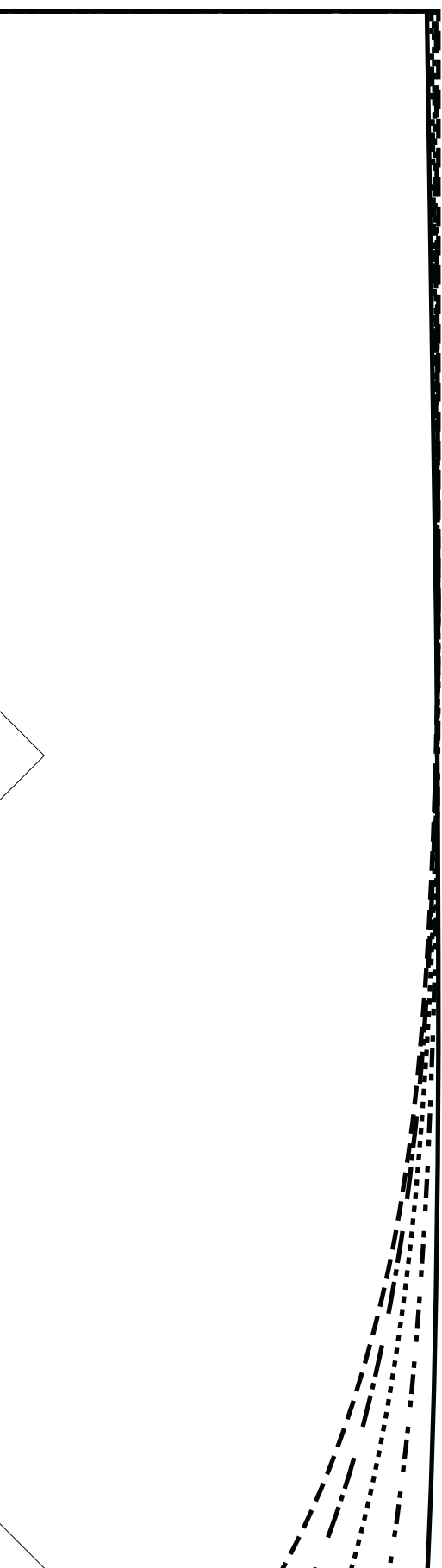
pocket placement



Sizes:

- XS - chest 50-56cm (20-22")
- . - - S - chest 58-66cm (23-26")
- M - chest 68-76cm (27-30")
- . - - L - chest 78-86cm (31-34")
- _____ XL - chest 89-94cm (35-37")

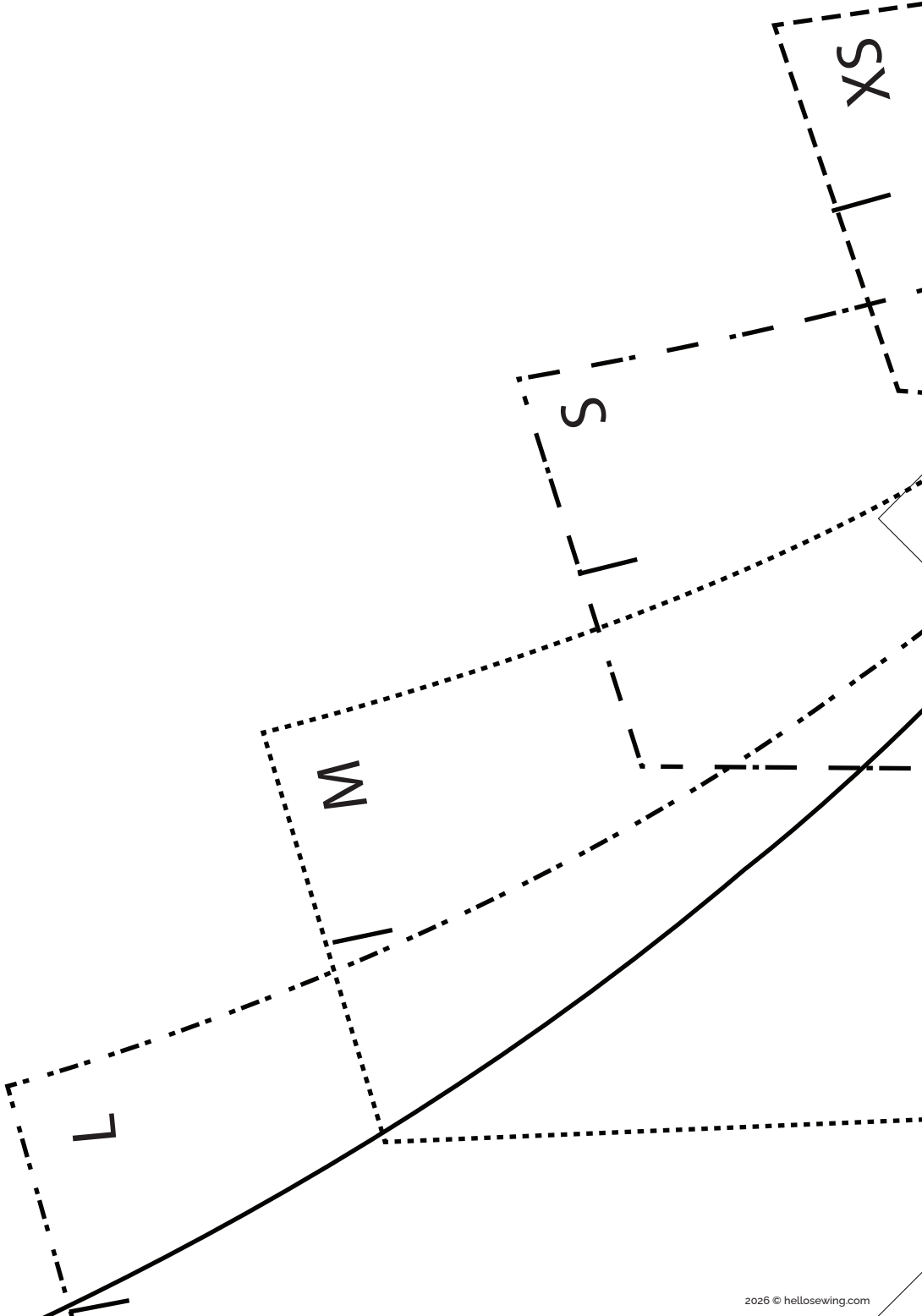
if between sizes - go with the larger size
 choose according to chest size, age sizes are indicative



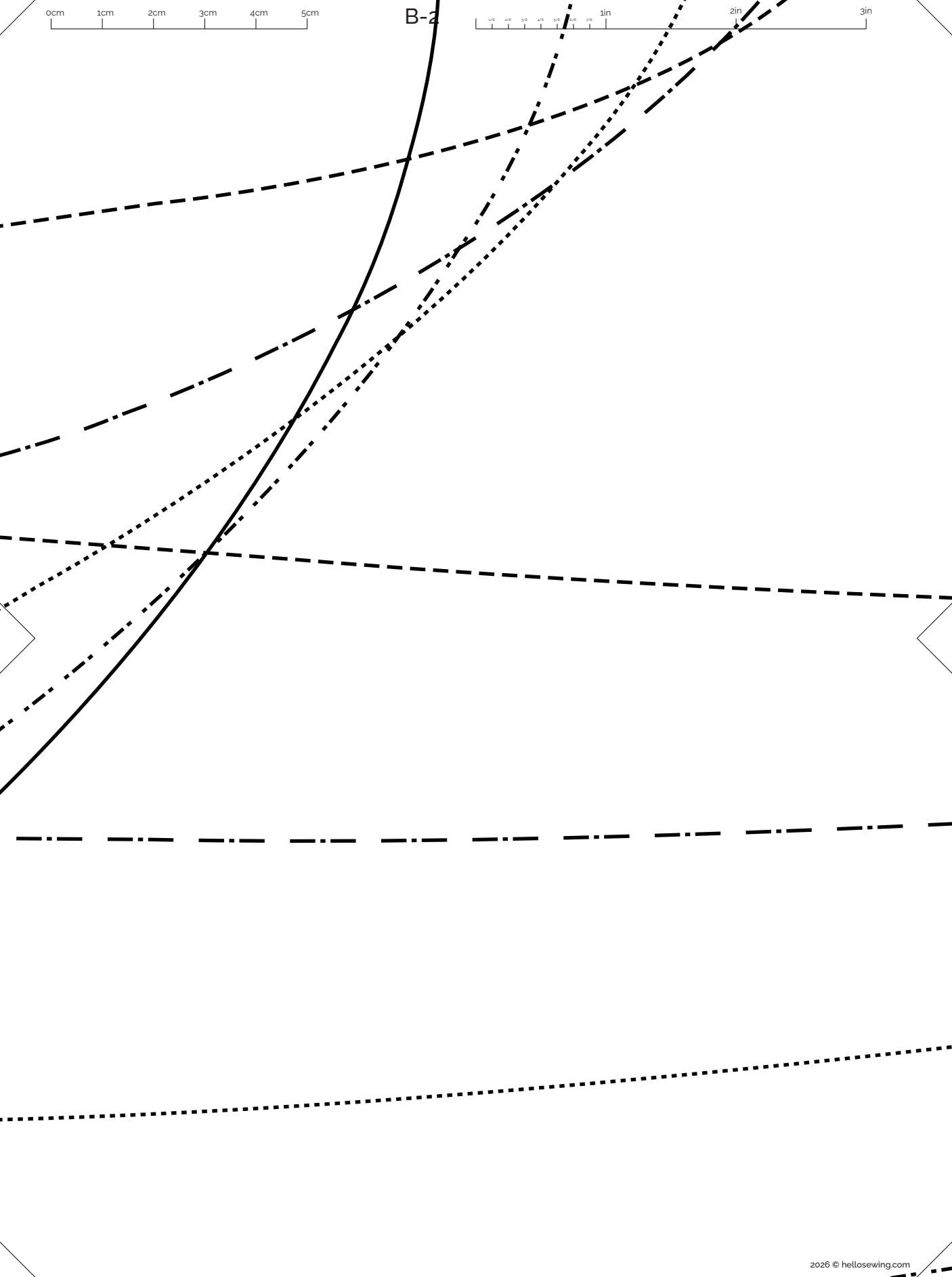
0cm 1cm 2cm 3cm 4cm 5cm

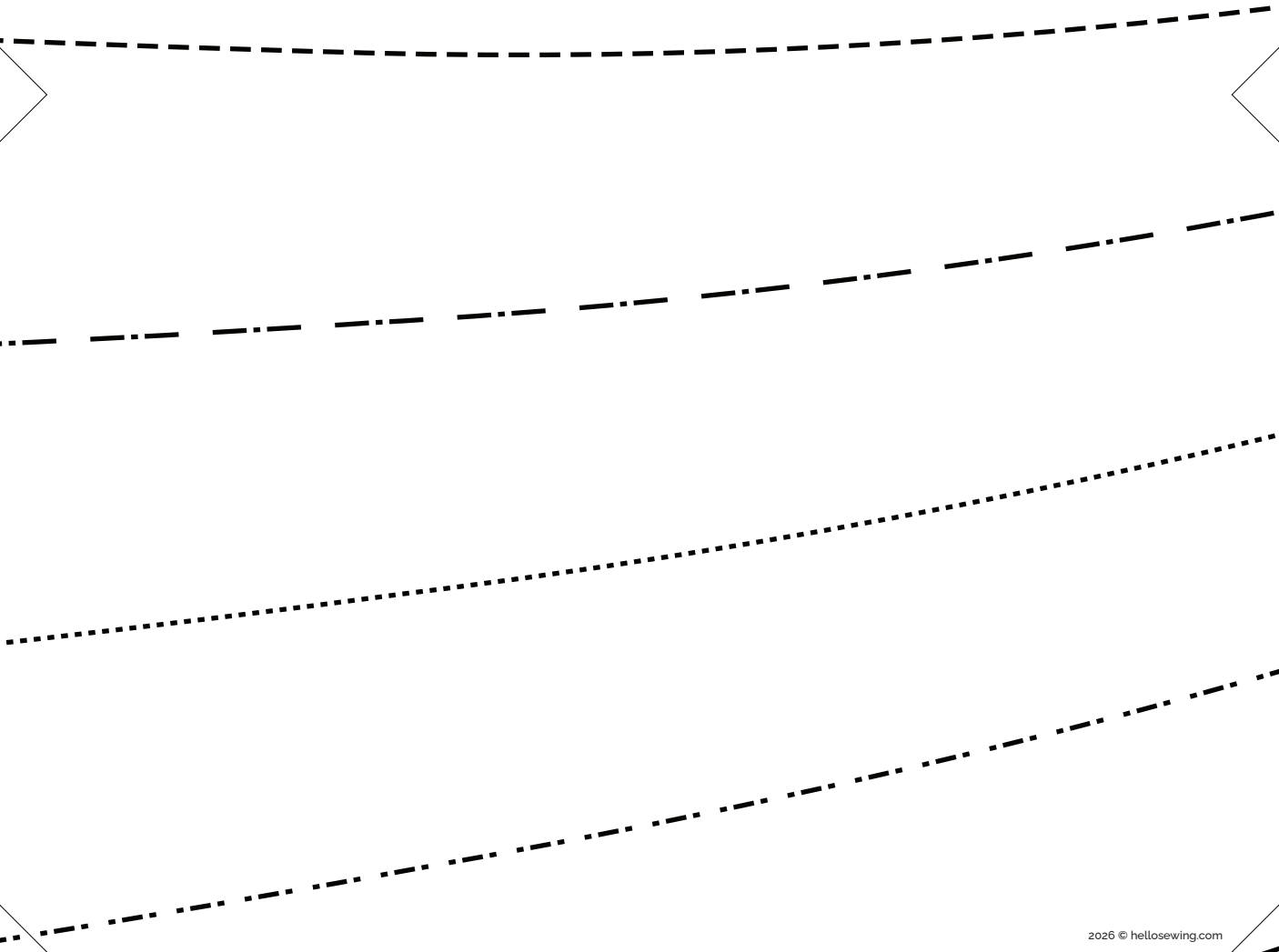
B-1

1/8 1/4 3/8 1/2 5/8 3/4 7/8 1in 2in 3in



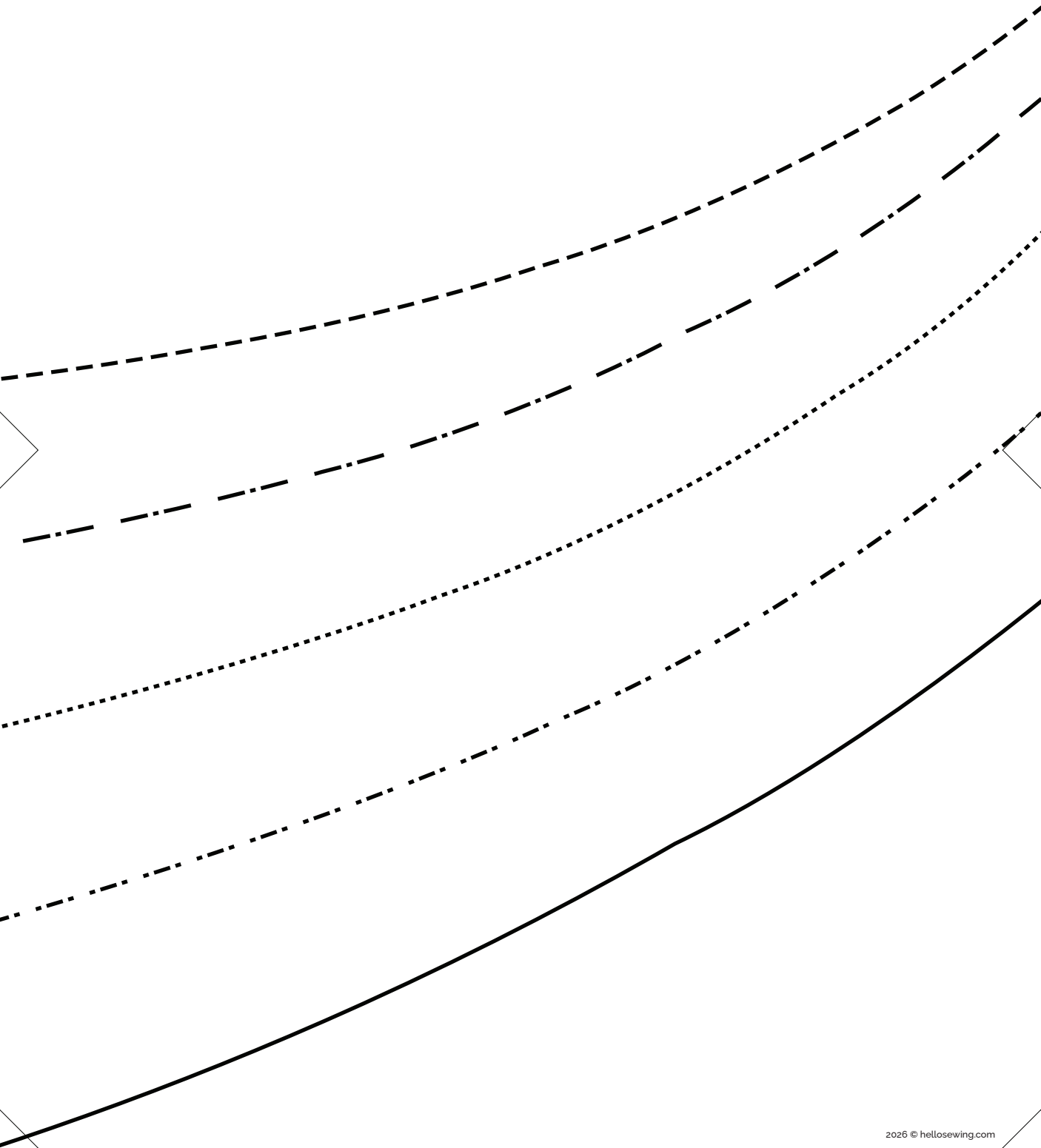
B-2



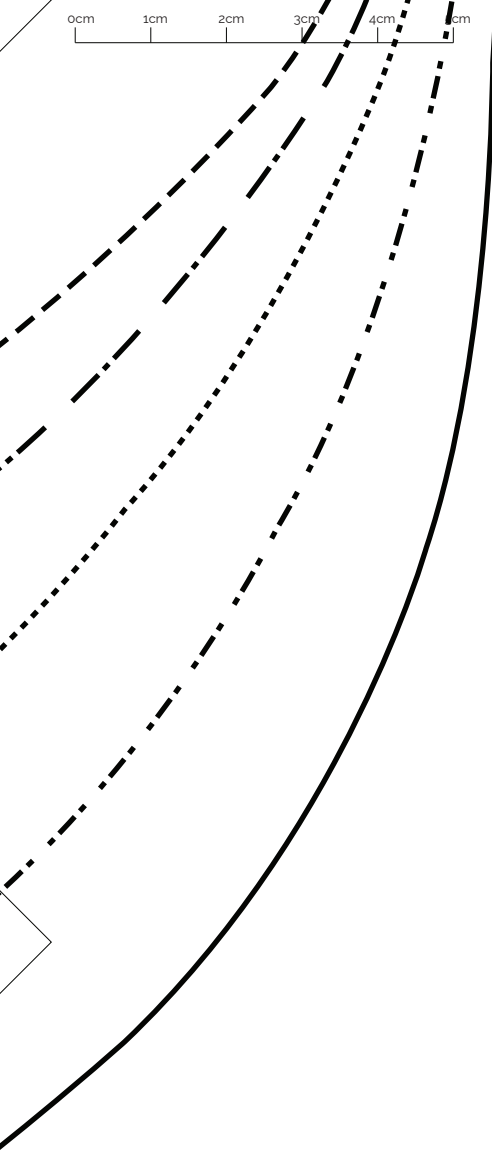
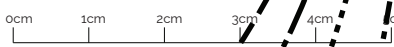




B-4



B-5





C-1



XL



Kids Crossback Apron (pocket)

cut 2 on fold from woven cotton
(one main, one lining)

FOLD

XS

S

M

