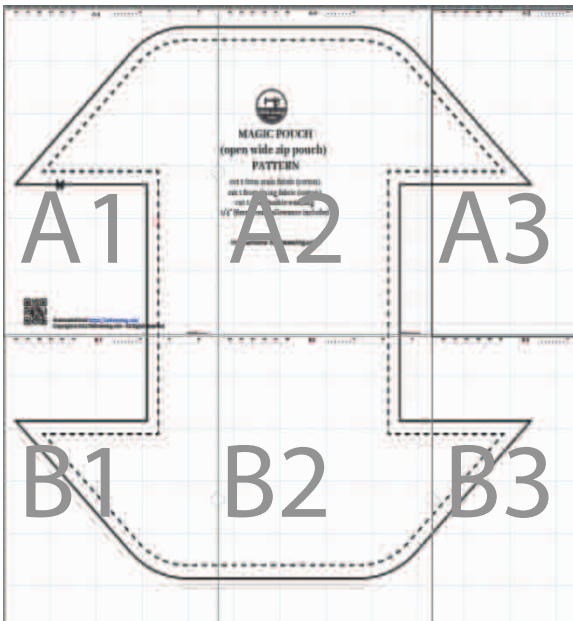


assembly diagram:





MAGIC POUCH (open wide zip pouch) PATTERN

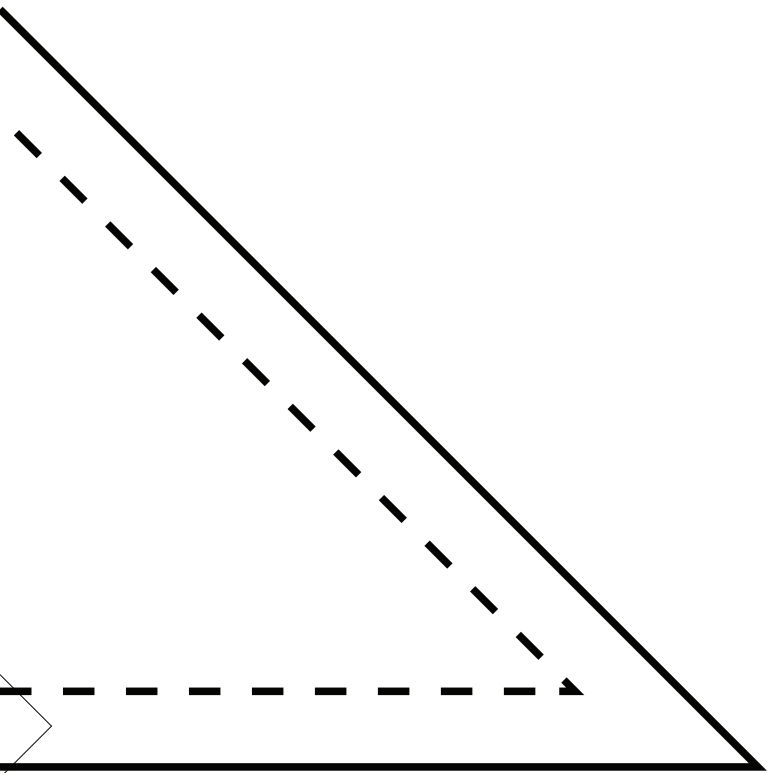
cut 1 from main fabric (cotton)

cut 1 from lining fabric (cotton)

cut 1 from fusible wadding

1/4" (6mm) seam allowance included

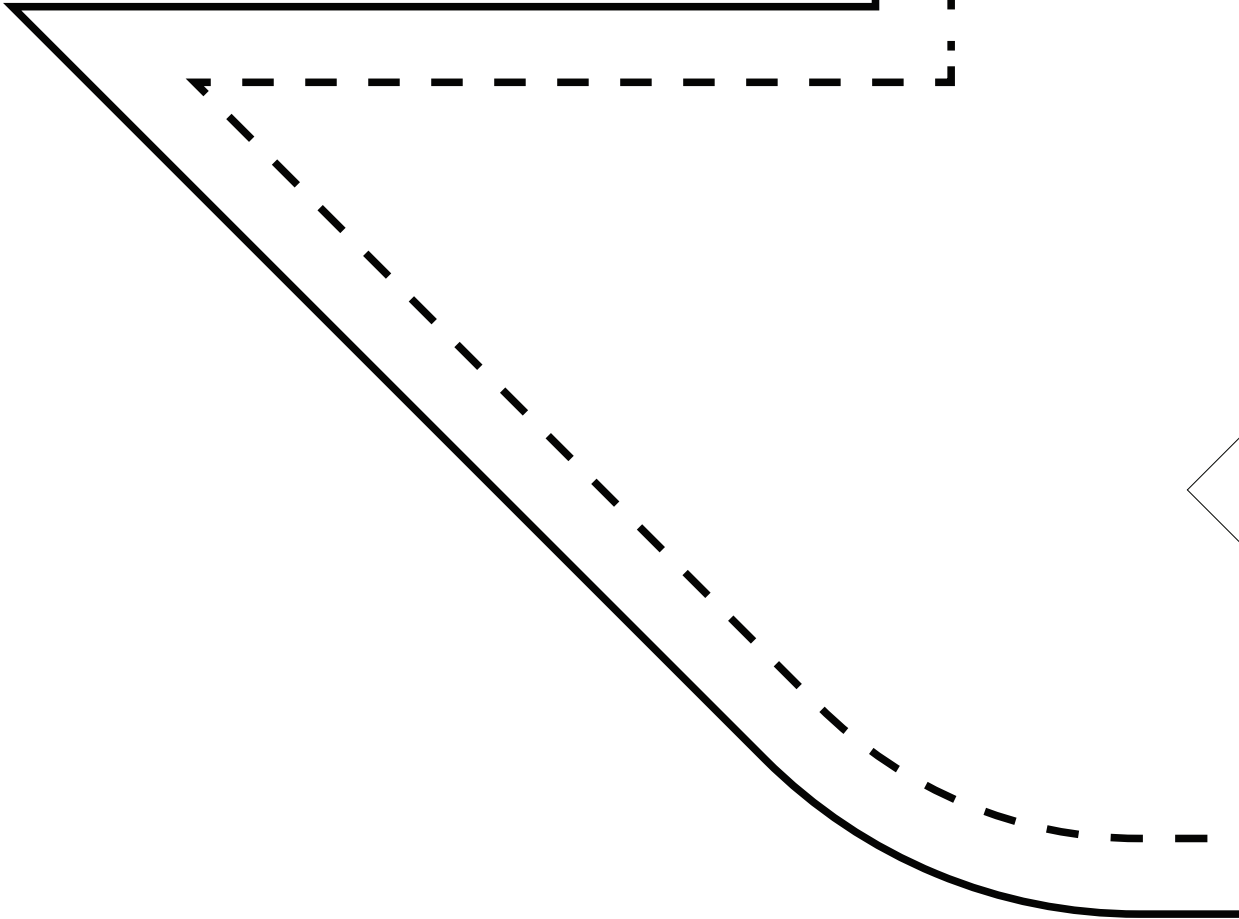
instructions: hellosewing.com



0cm 1cm 2cm 3cm 4cm 5cm

B-1

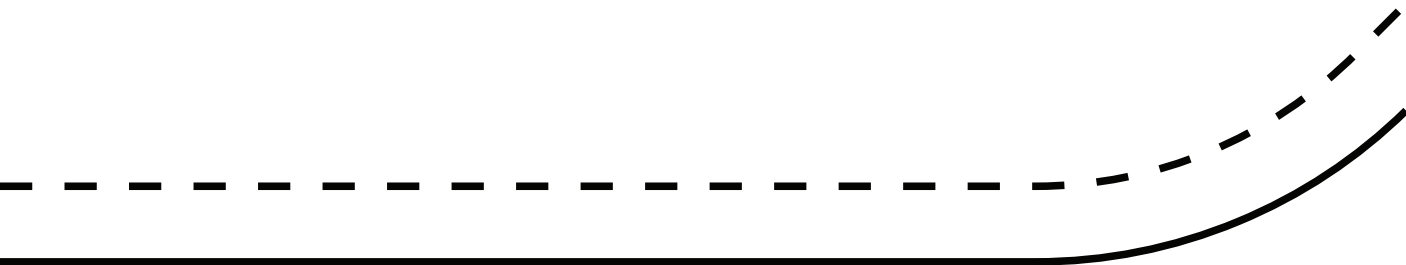
10 20 30 40 50 60 70 1in 2in 3in



B-2

0cm 1cm 2cm 3cm 4cm 5cm

1in 2in 3in



0cm 1cm 2cm 3cm 4cm 5cm

B-3

1in 2in 3in

