



downloaded from <https://hellosewing.com/>

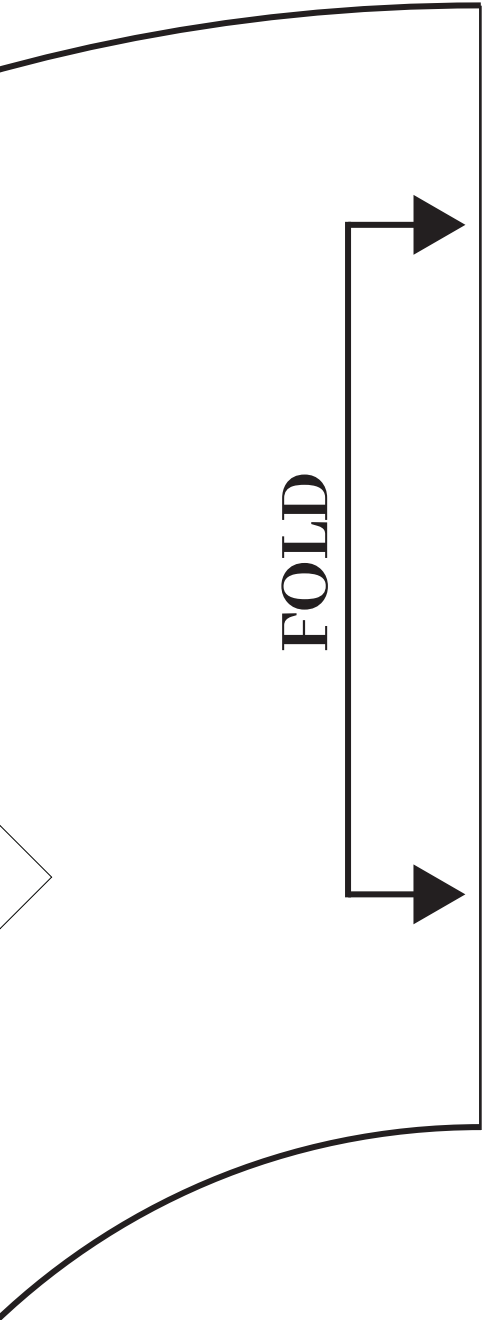
Copyright © 2020 Hellosewing.com - All Rights Reserved.



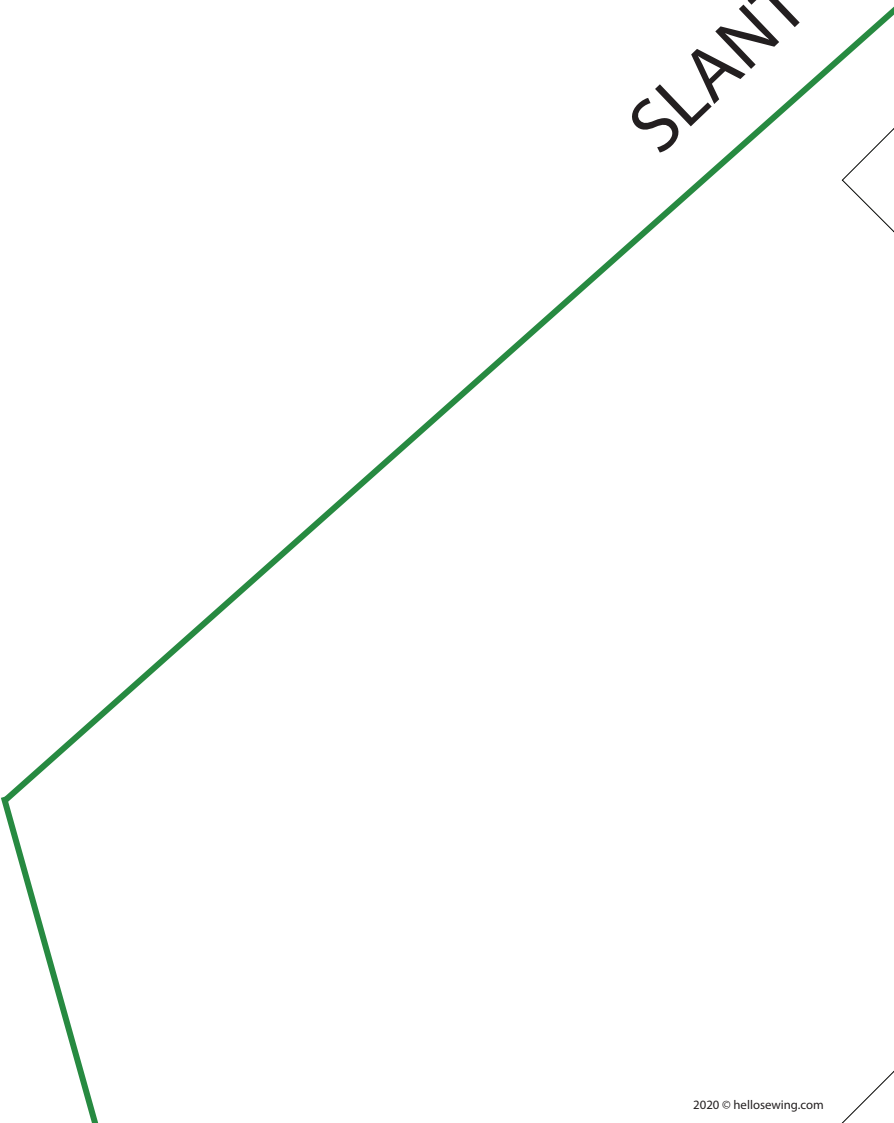
WITCH HAT BRIM

cut 1 on fold

1/4" seam allowance included



SLANT HEIGHT



RIGHT



WITCH HAT TOP

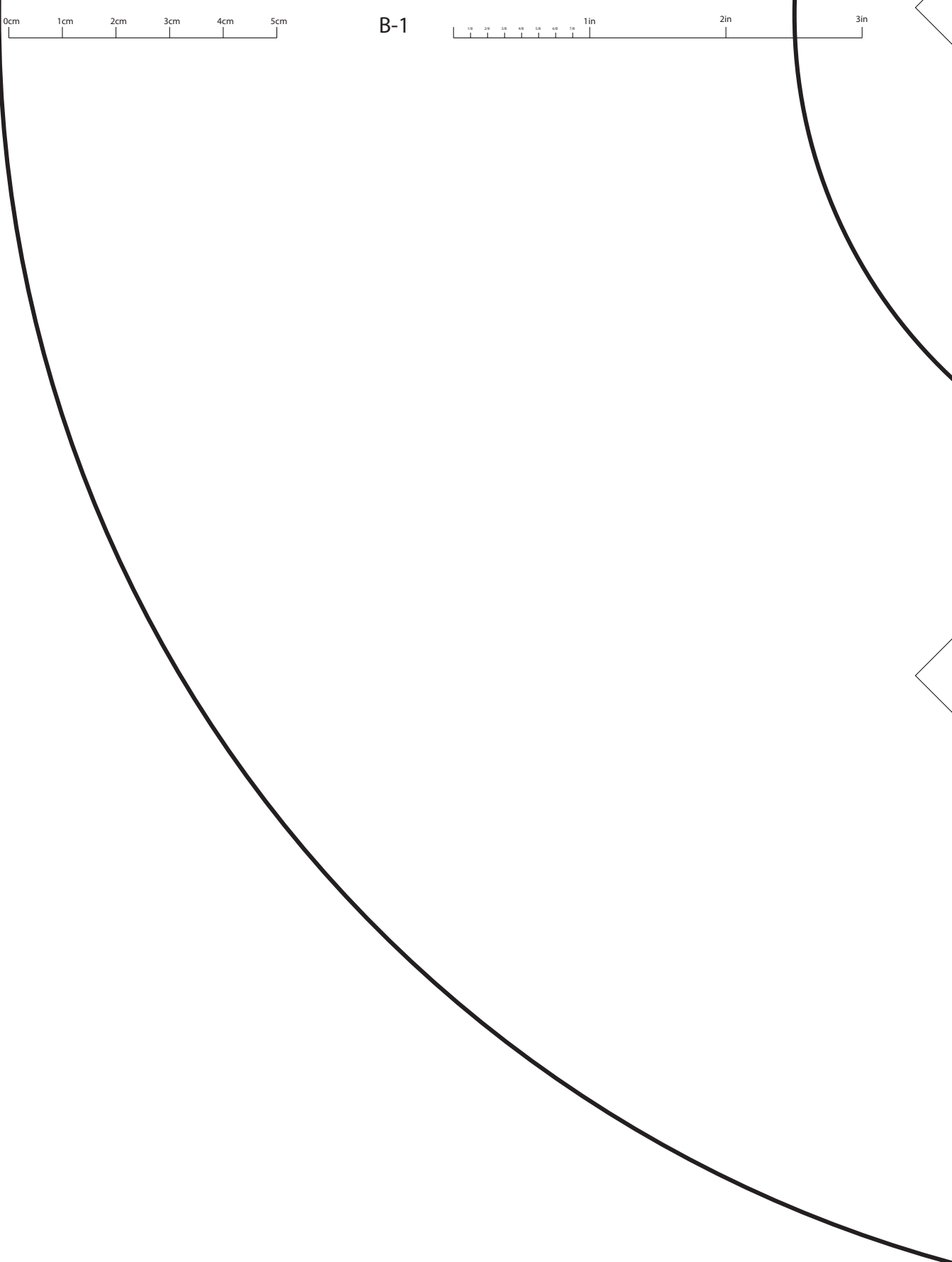
cut 1

1/4 " seam allowance included

0cm 1cm 2cm 3cm 4cm 5cm

B-1

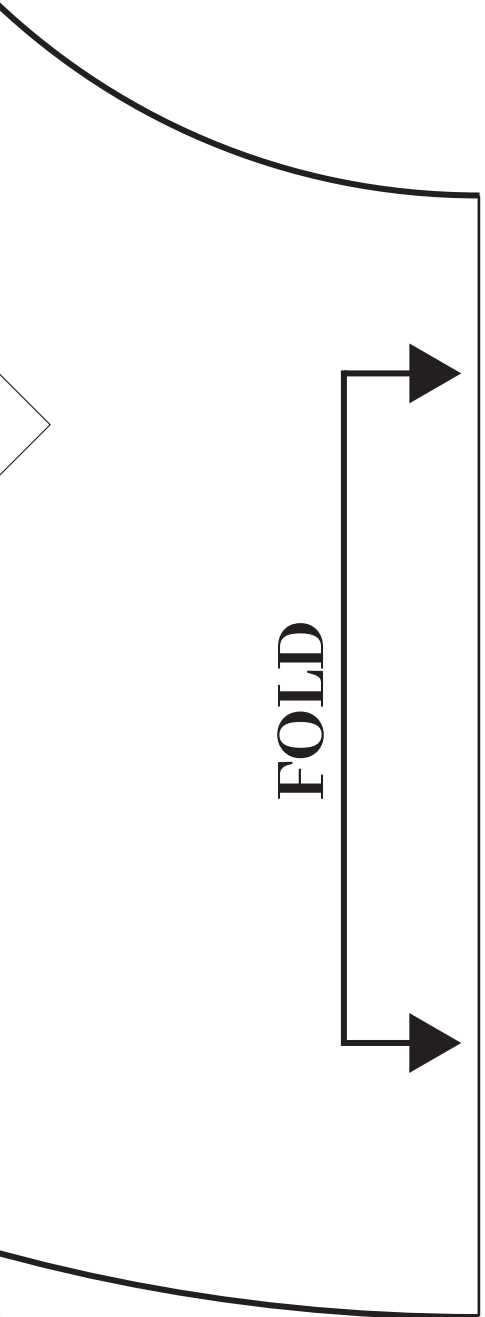
10 20 30 40 50 60 70 1in 2in 3in



0cm 1cm 2cm 3cm 4cm 5cm

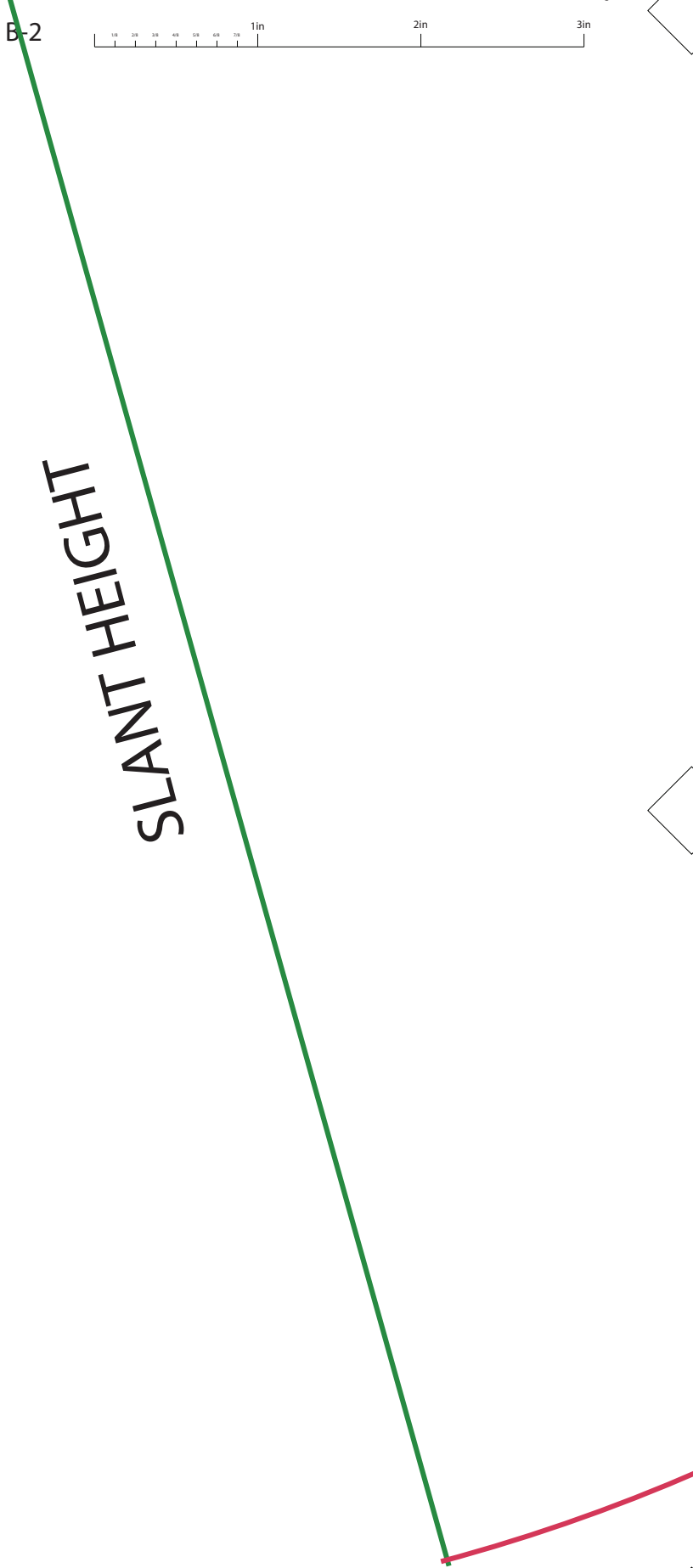
B-2

1/4 3/8 1/2 5/8 3/4 1in 2in 3in



FOLD

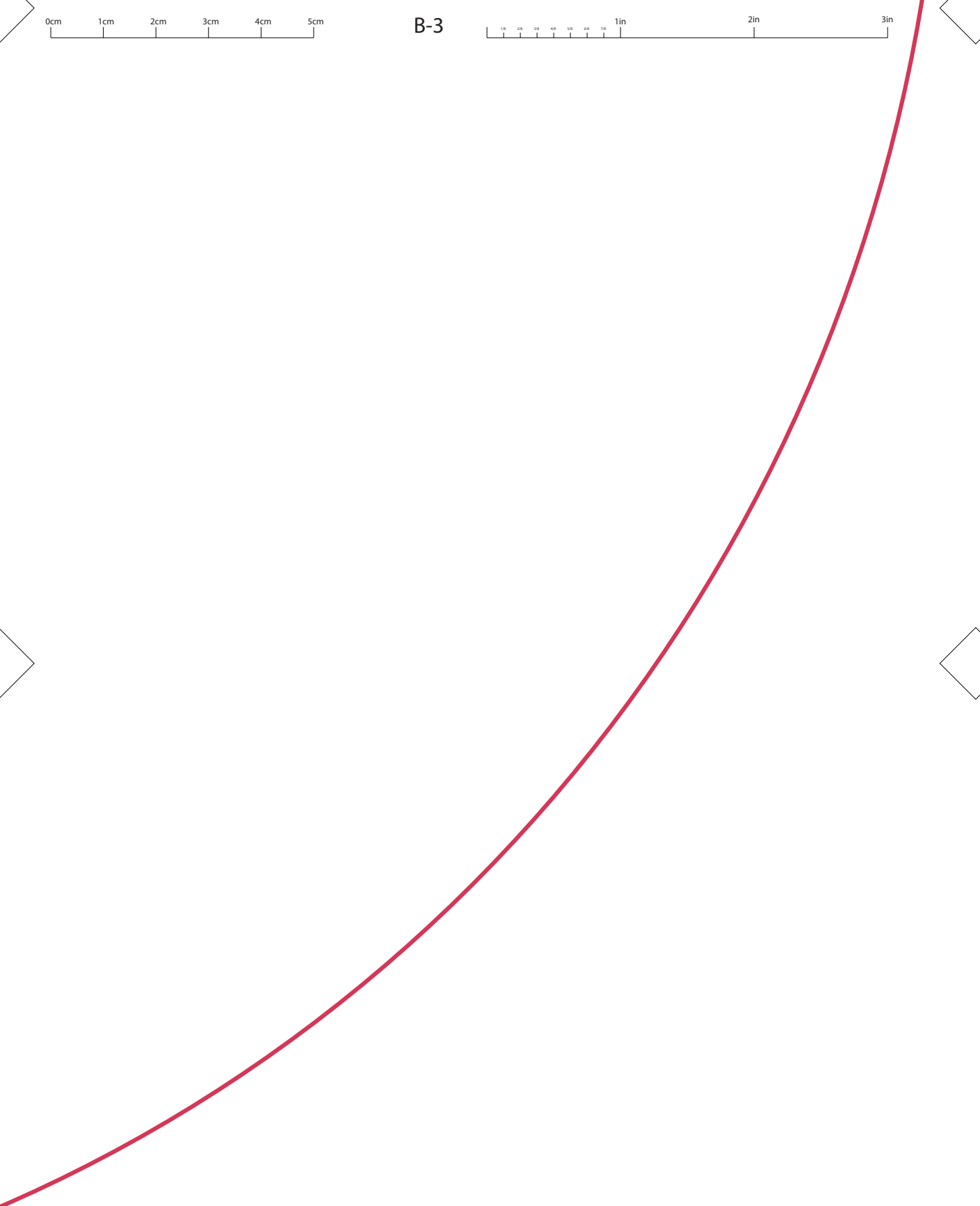
SLANT HEIGHT



0cm 1cm 2cm 3cm 4cm 5cm

B-3

1/8 3/8 1/2 5/8 3/4 1in 2in 3in



HEAD CIRCUMFERENCE + 1/2 in